

Figure 1. Location of 2001 monitoring stations in Kern County

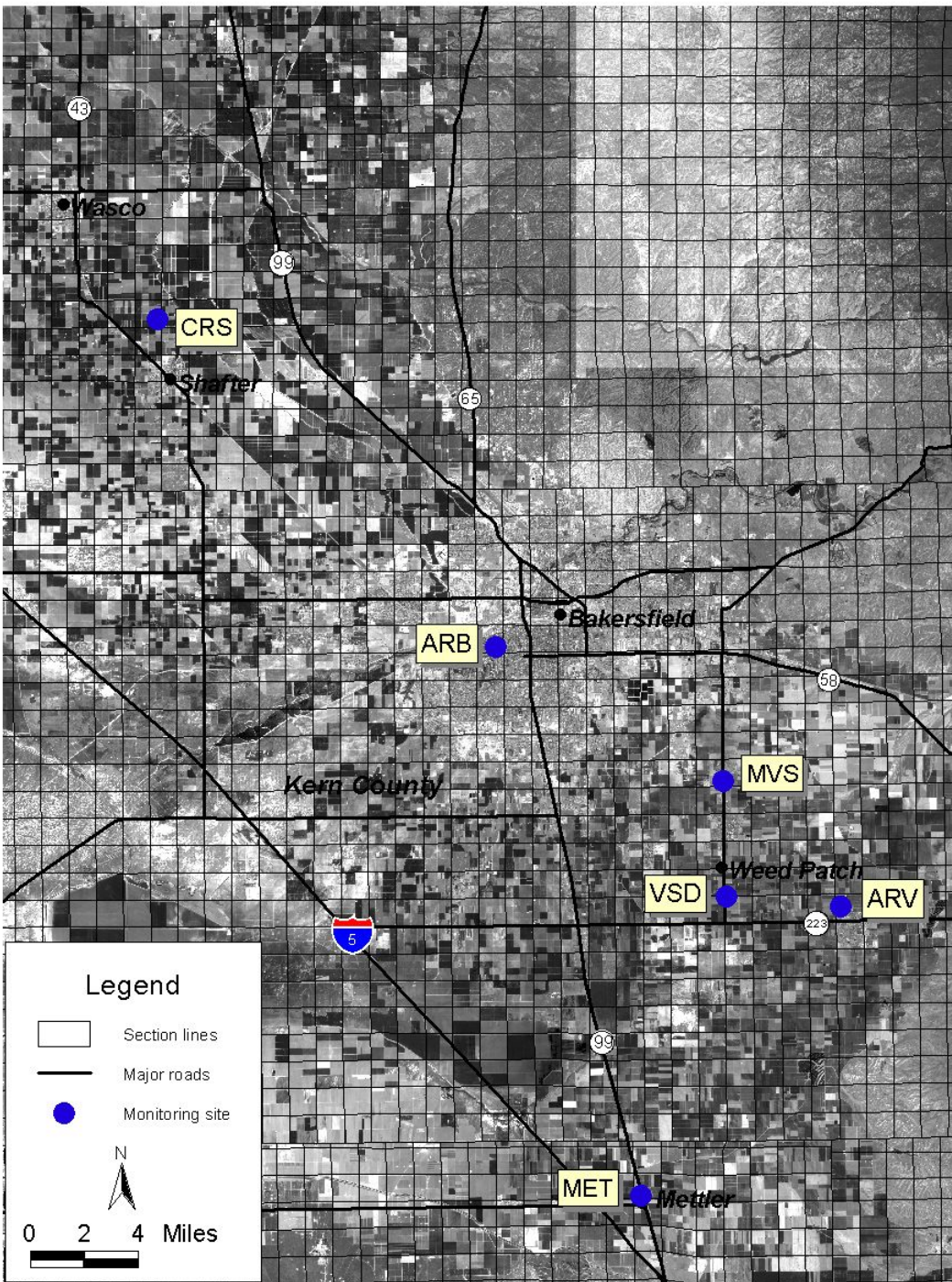




Figure 2. Location of 2001 monitoring stations in Monterey/Santa Cruz counties

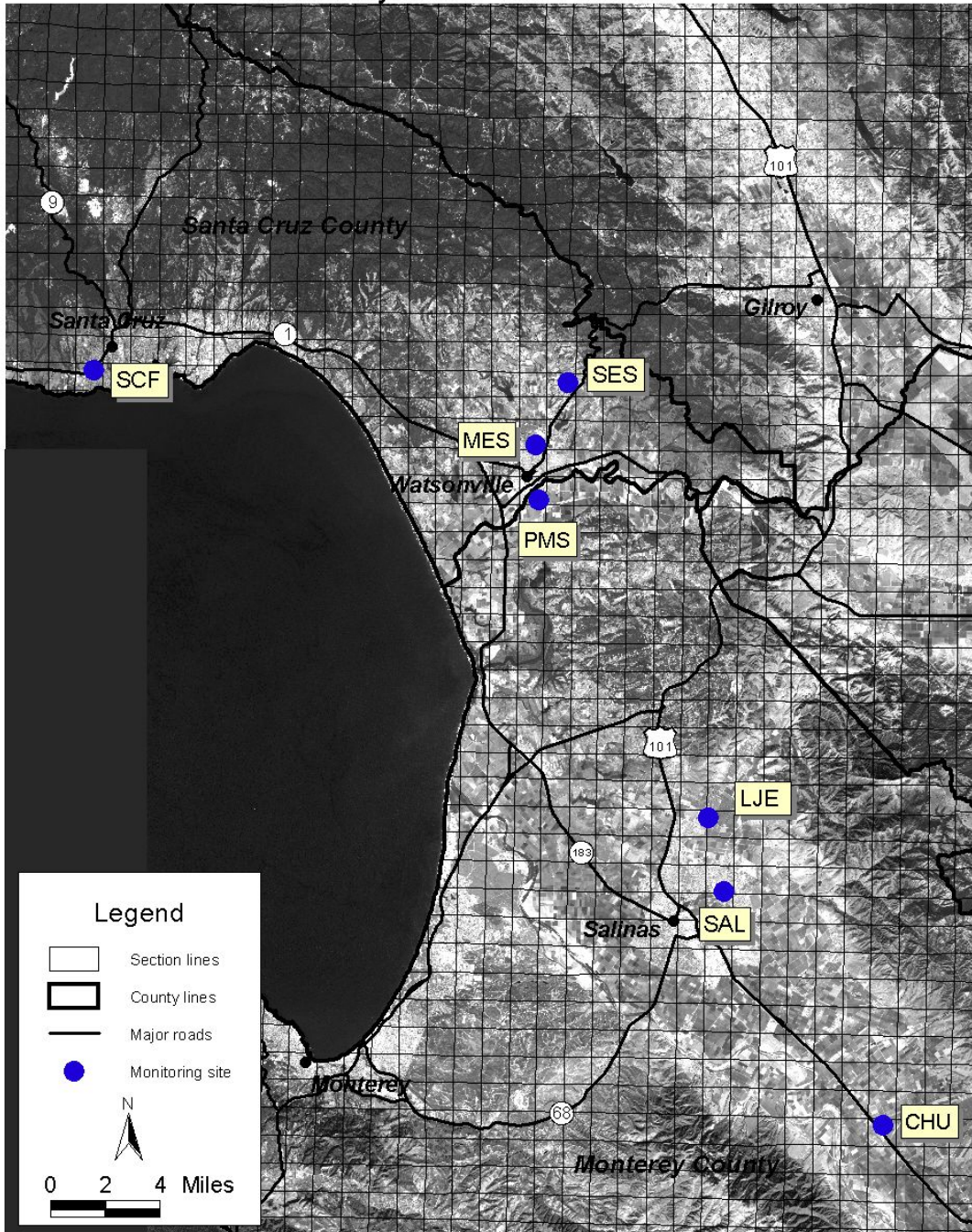




Figure 3. Location of 2001 monitoring stations in Santa Barbara County

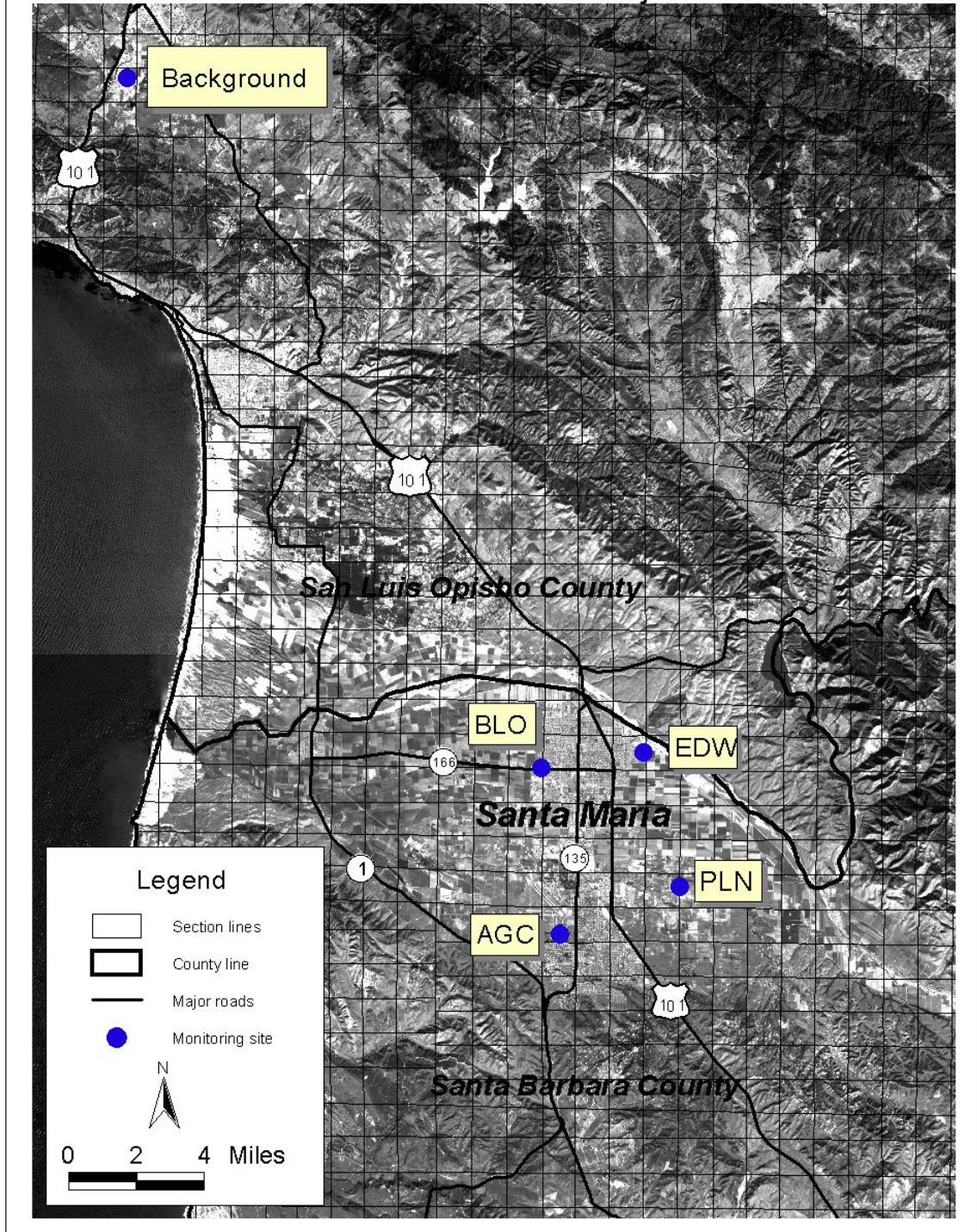




Figure 4. Location of 2001 monitoring stations in Ventura County

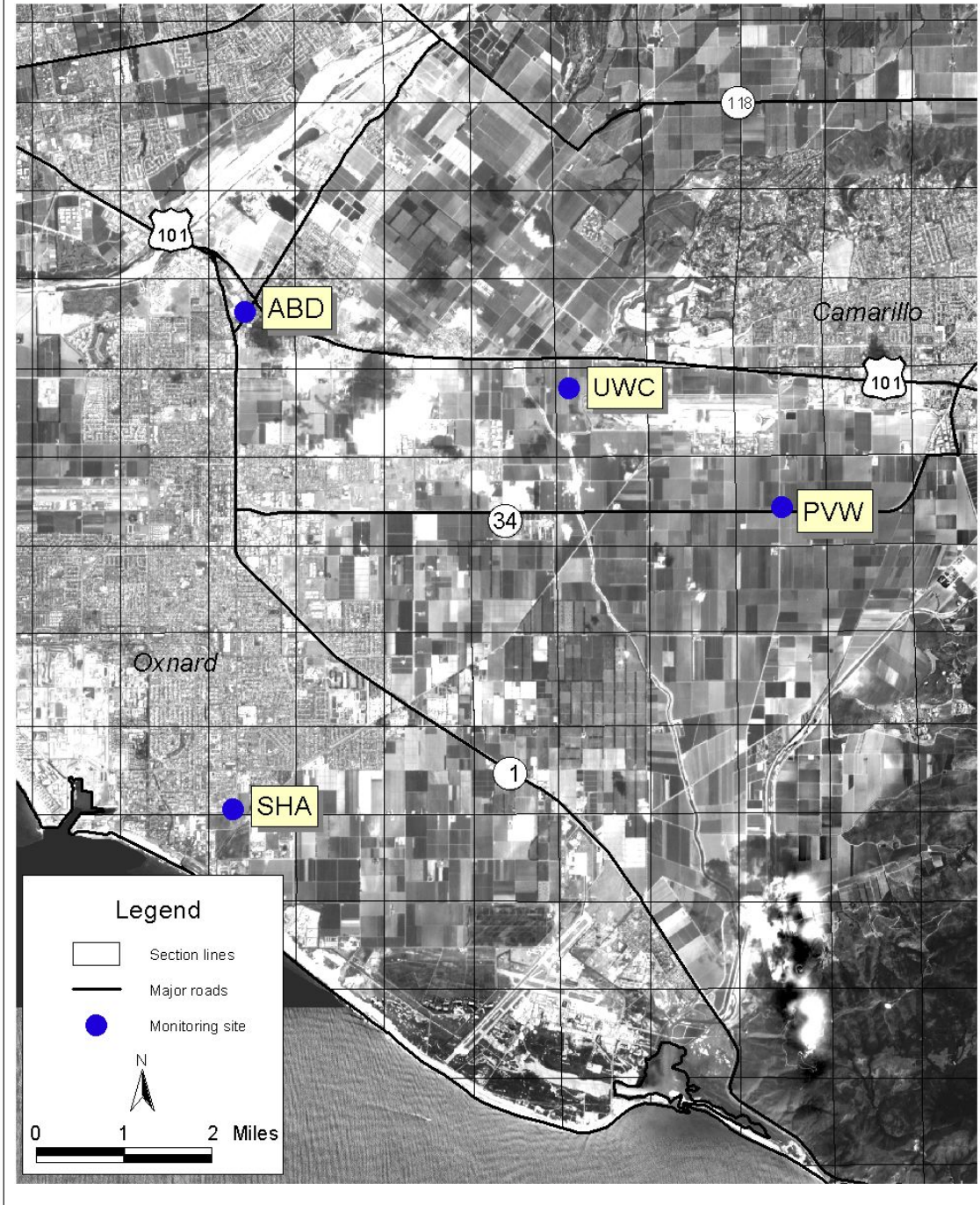


Figure 5. 2001 methyl bromide use in Kern County during the monitoring period

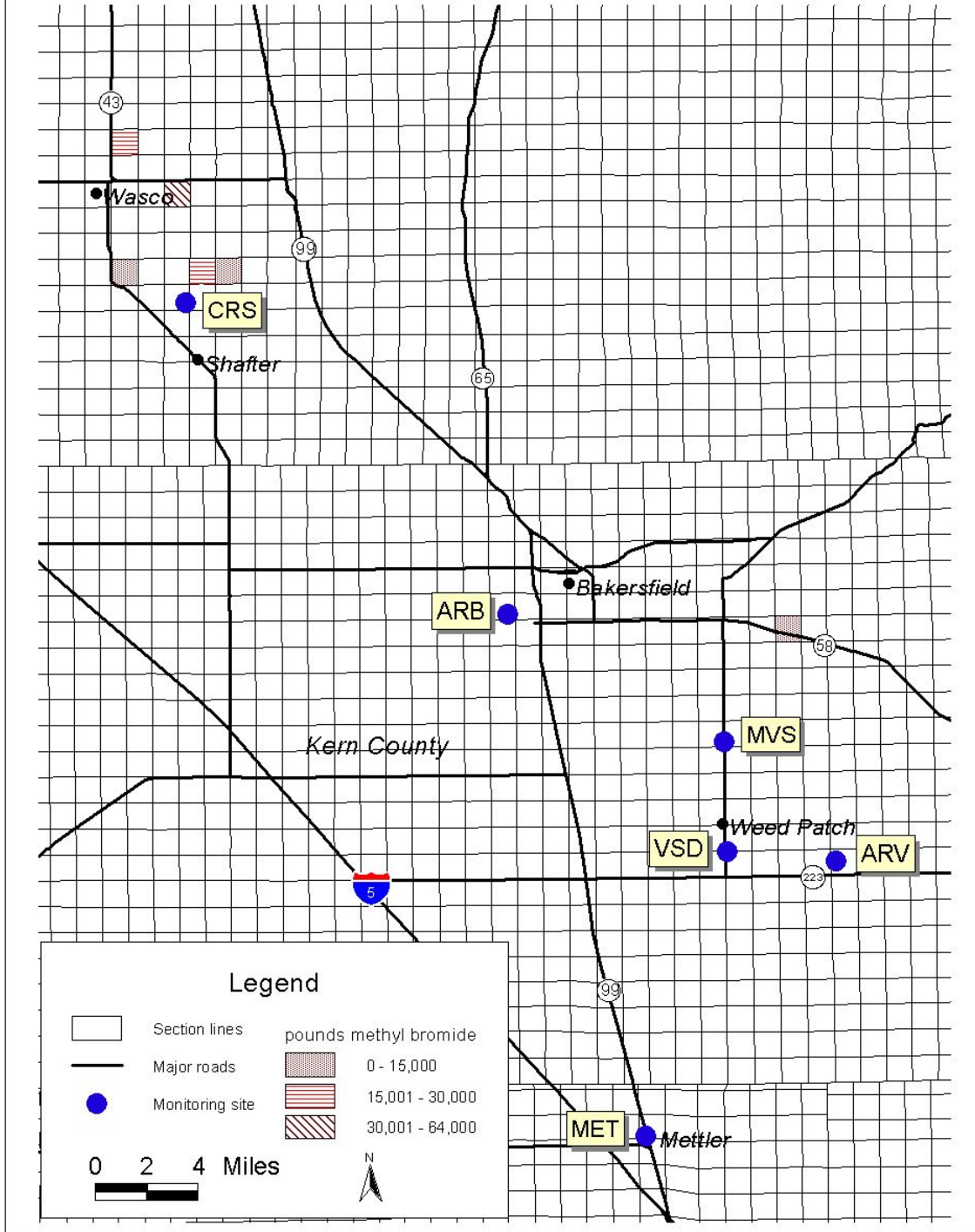


Figure 6. 2001 methyl bromide use in Monterey/Santa Cruz counties during the monitoring period

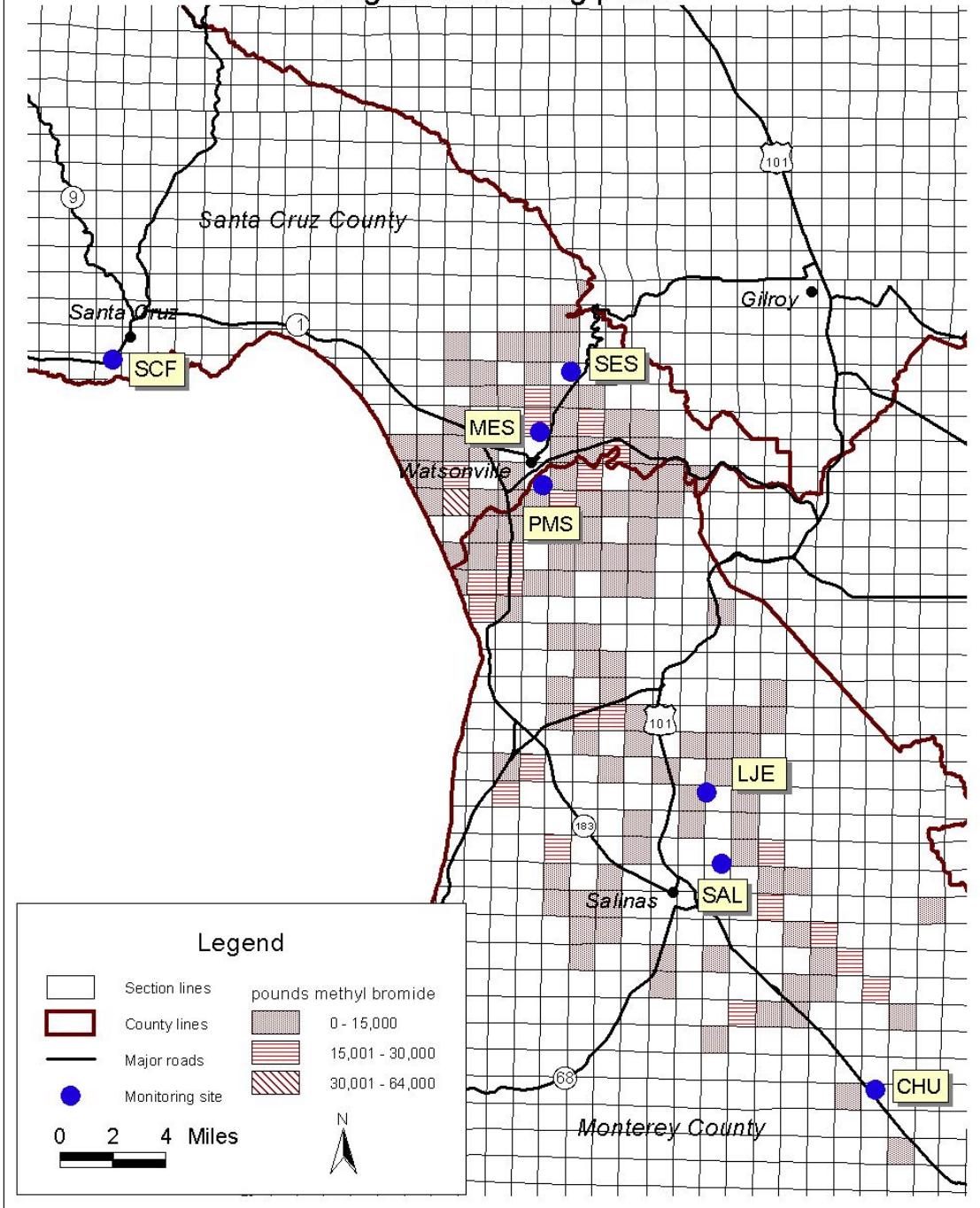




Figure 7. 2001 methyl bromide use in Santa Barbara County during the monitoring period

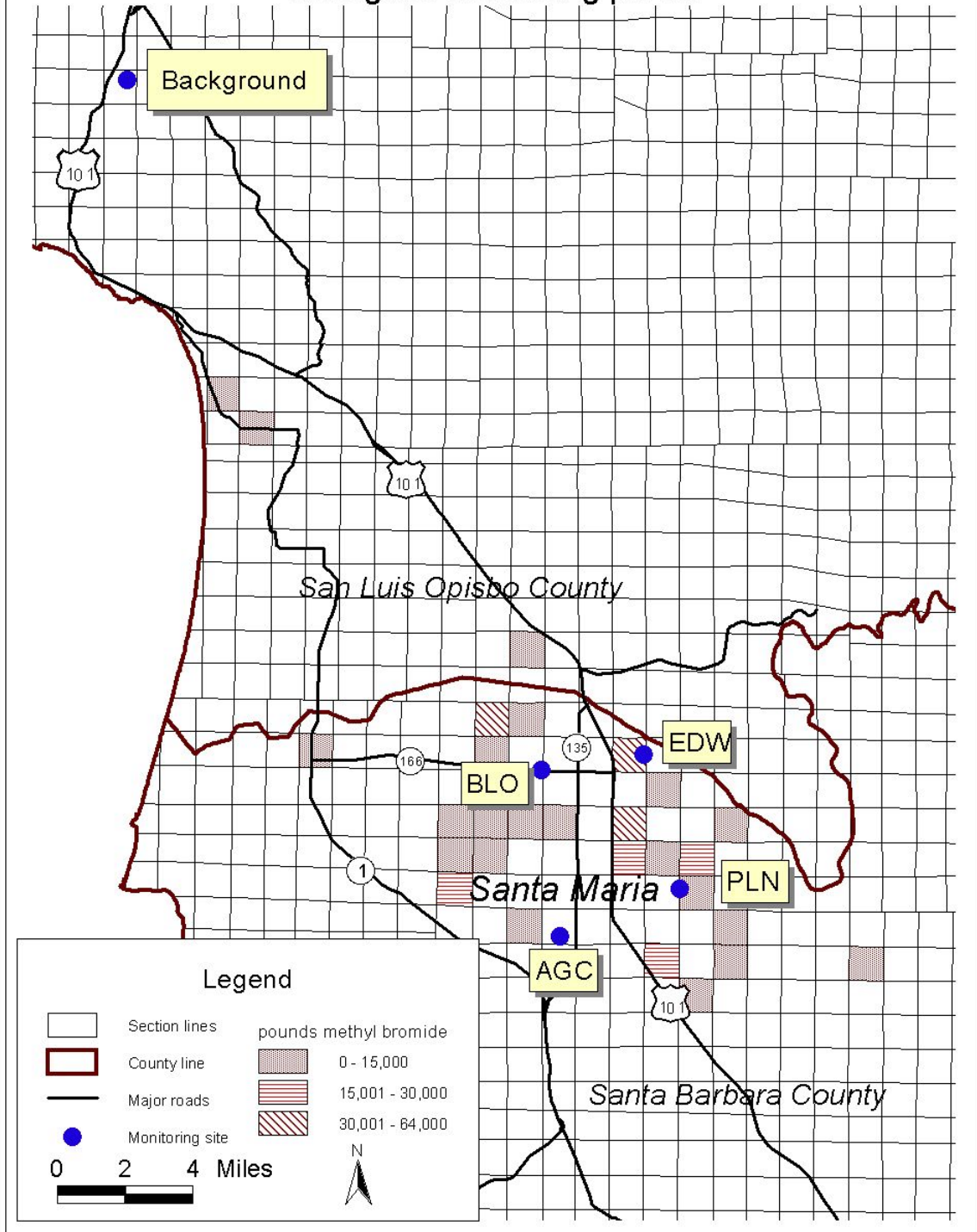


Figure 8. 2001 methyl bromide use in Ventura County during the monitoring period

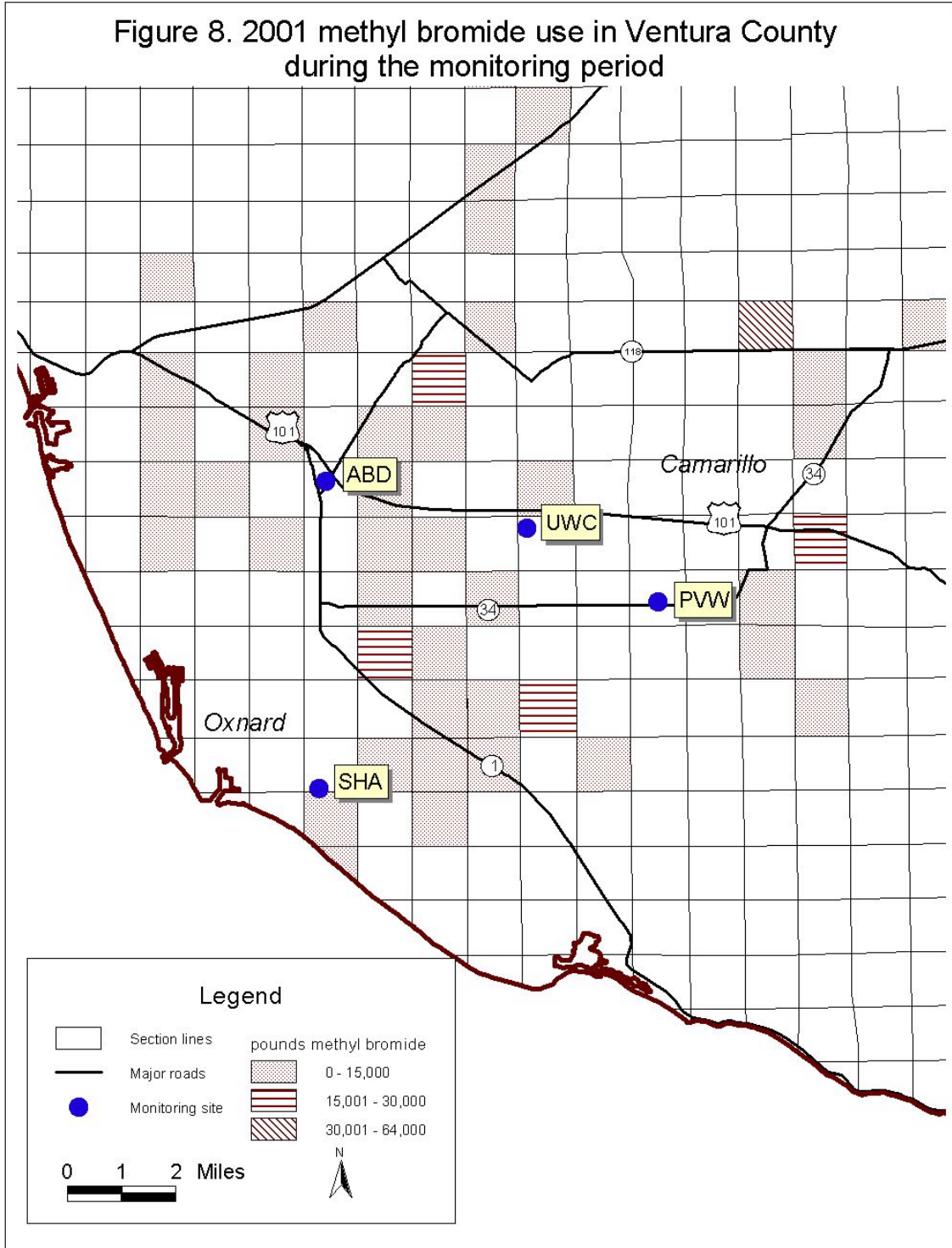




Figure 9. 2001 methyl bromide use by county

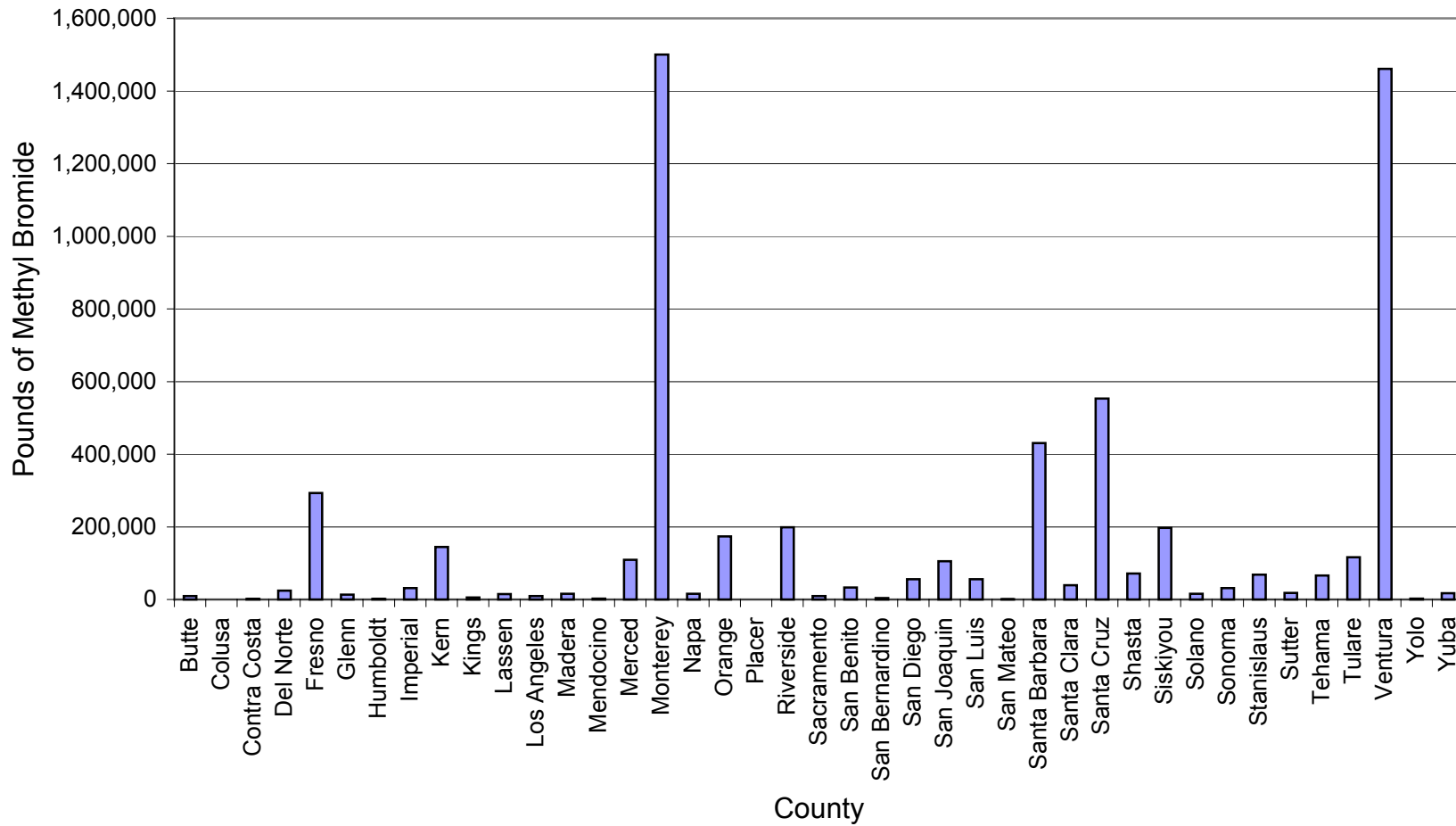


Figure 10. 2001 Kern County methyl bromide use by month and day

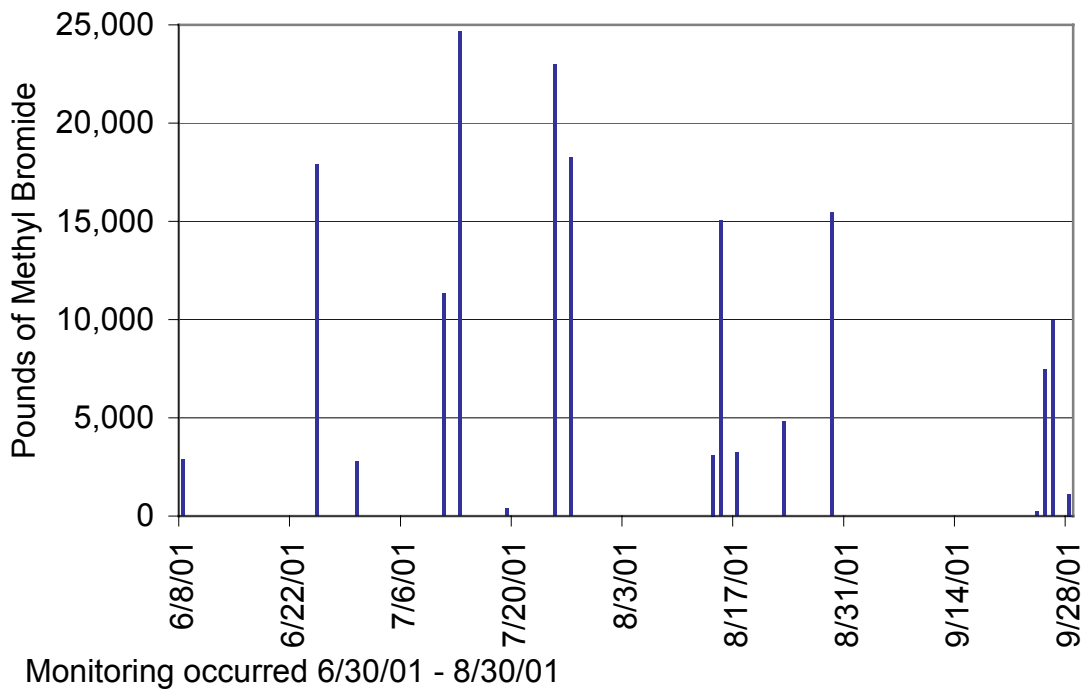
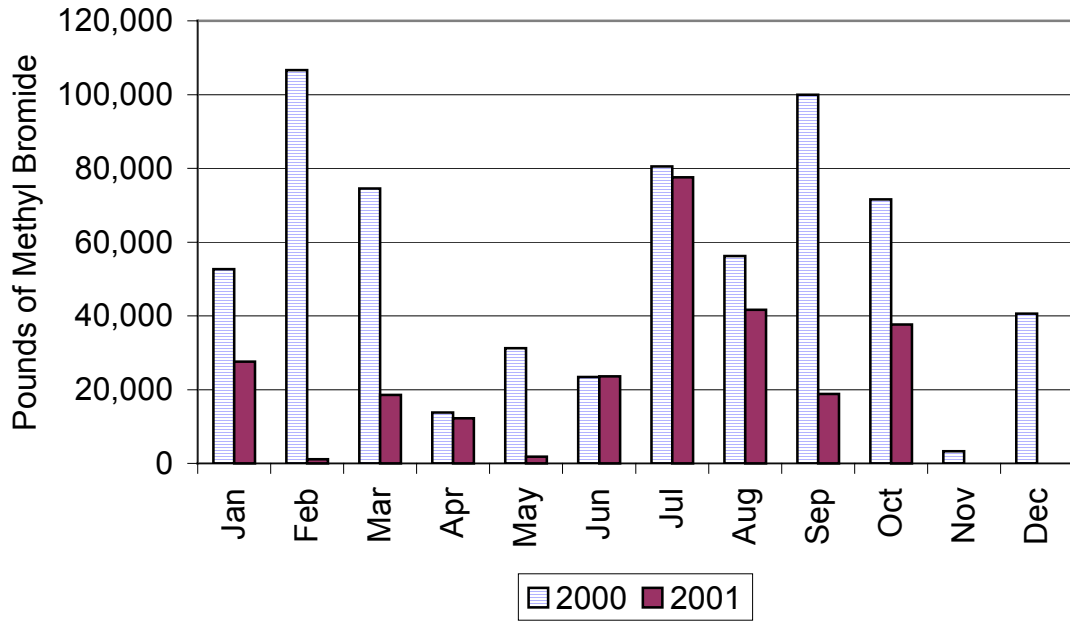




Figure 11. 2001 Monterey County methyl bromide use by month and day

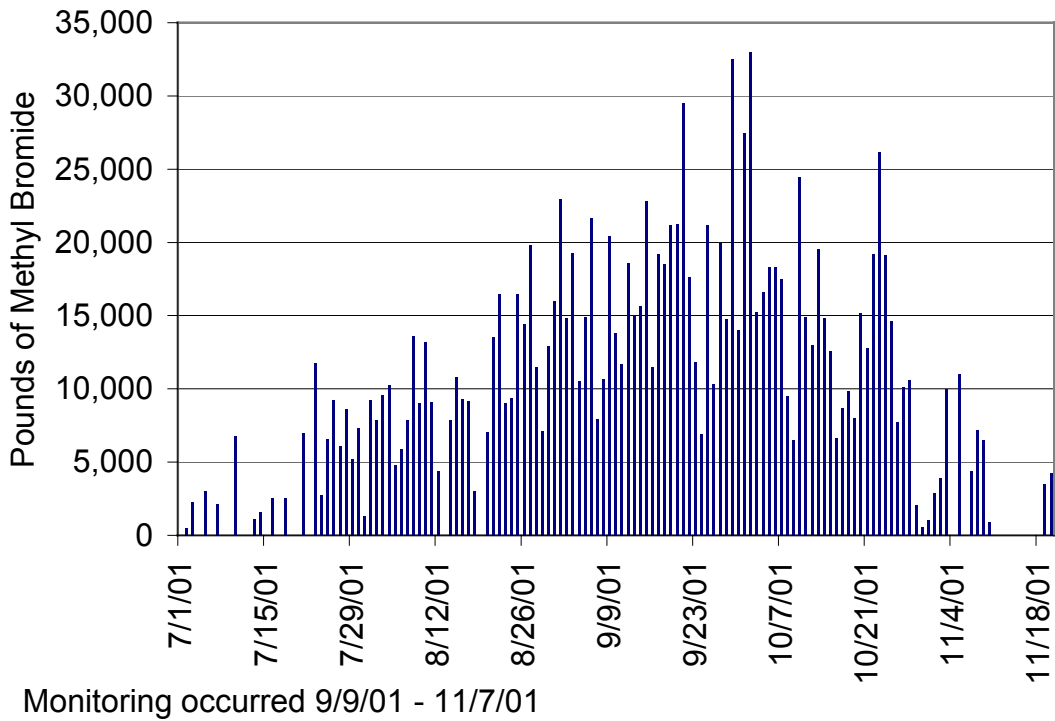
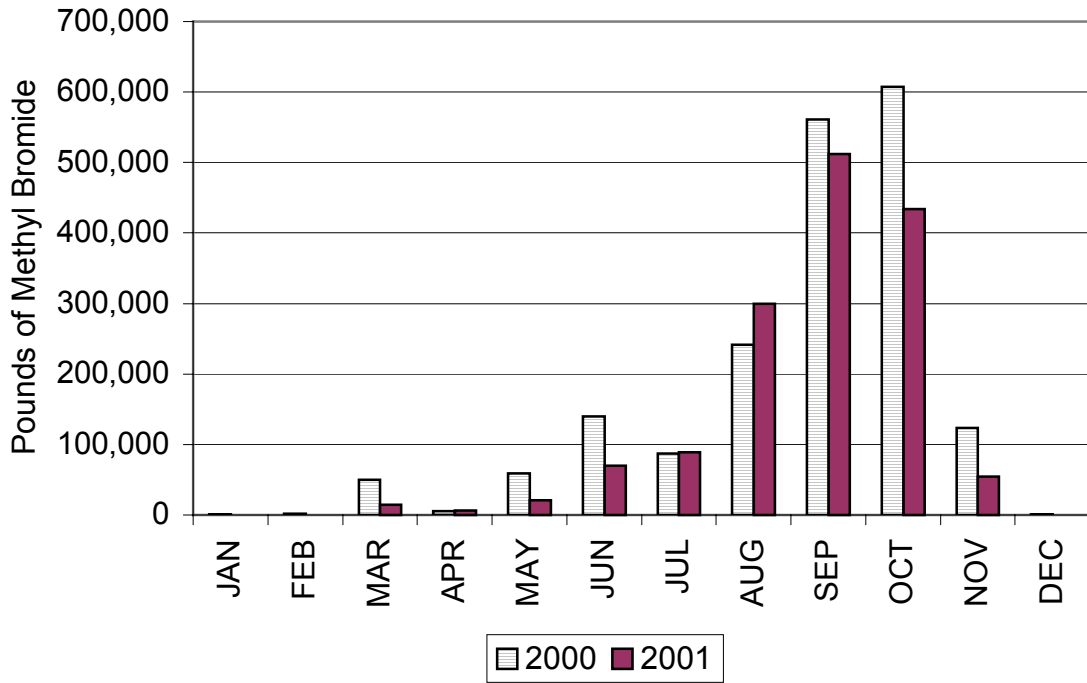
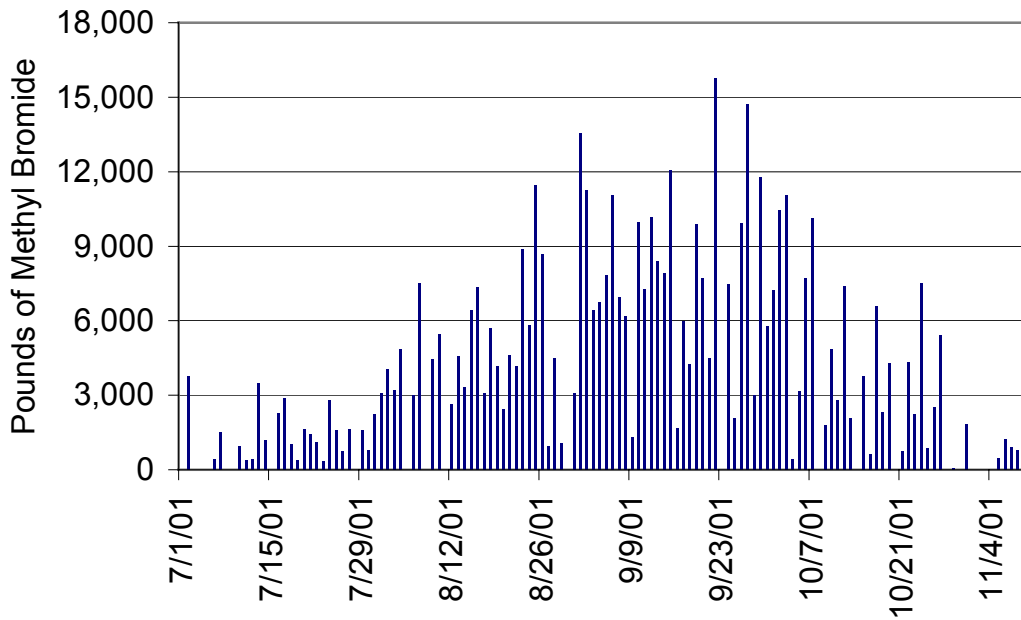
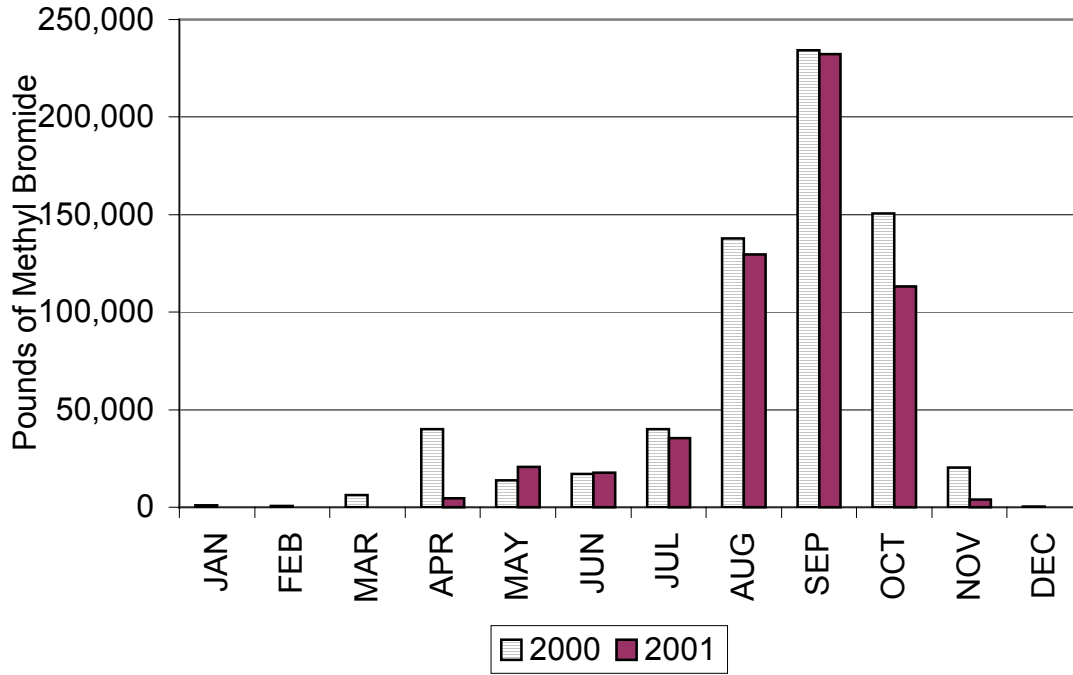


Figure 12. 2001 Santa Cruz County methyl bromide use by month and day



Monitoring occurred 9/9/01 - 11/7/01



Figure 13. 2001 Santa Barbara County methyl bromide use by month and day

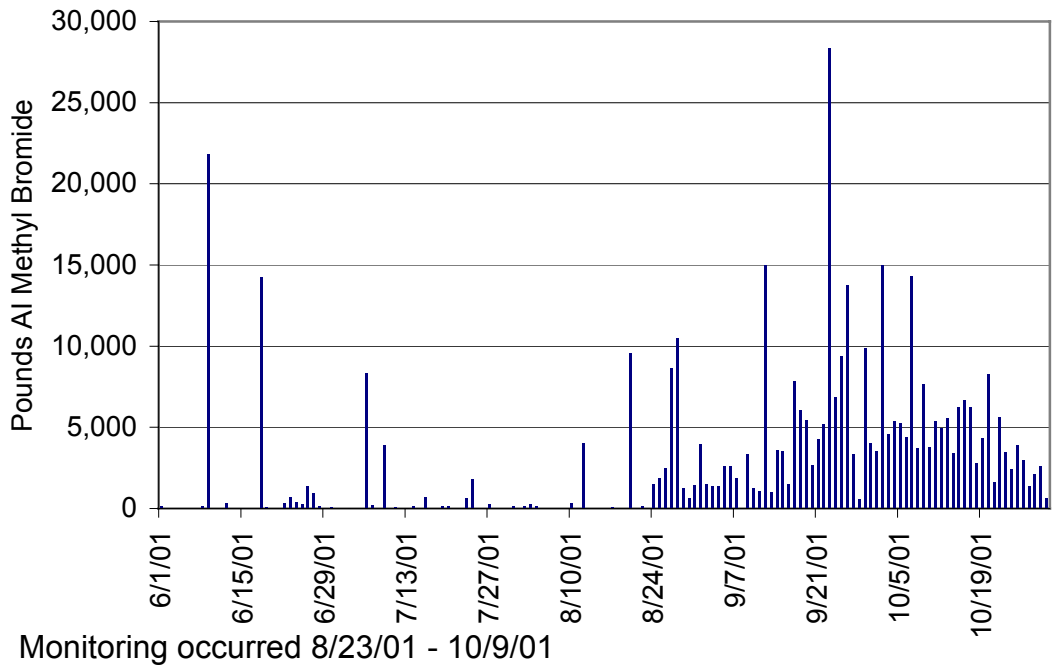
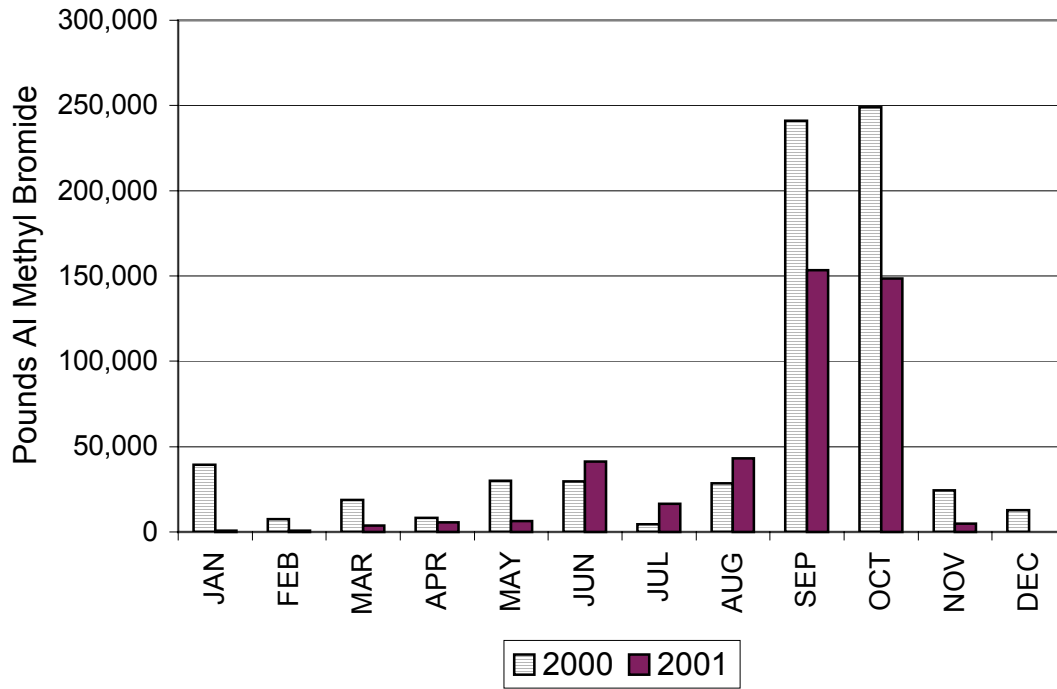
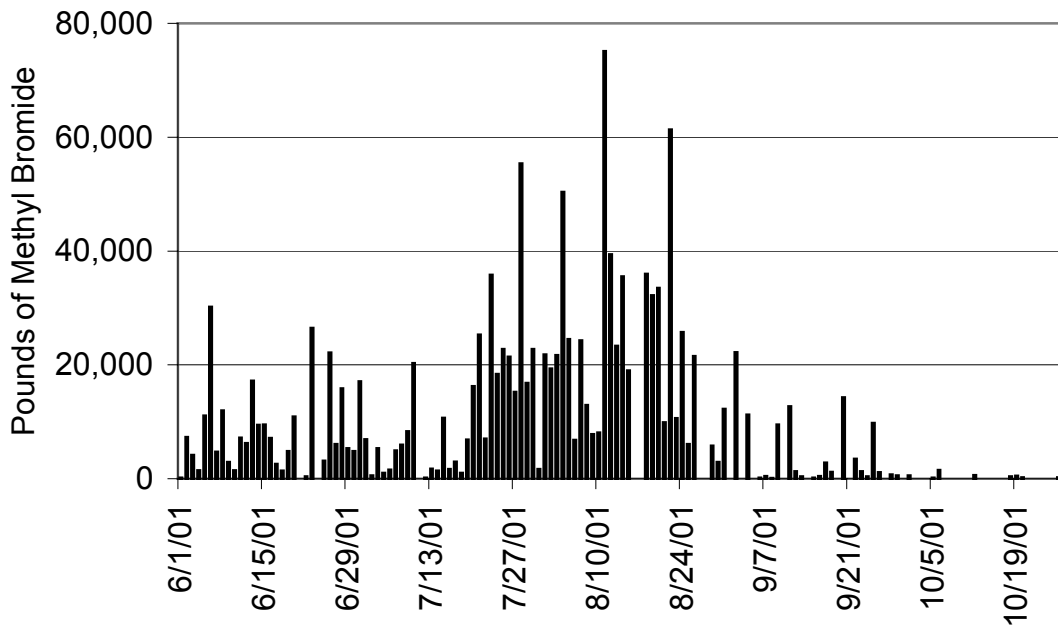
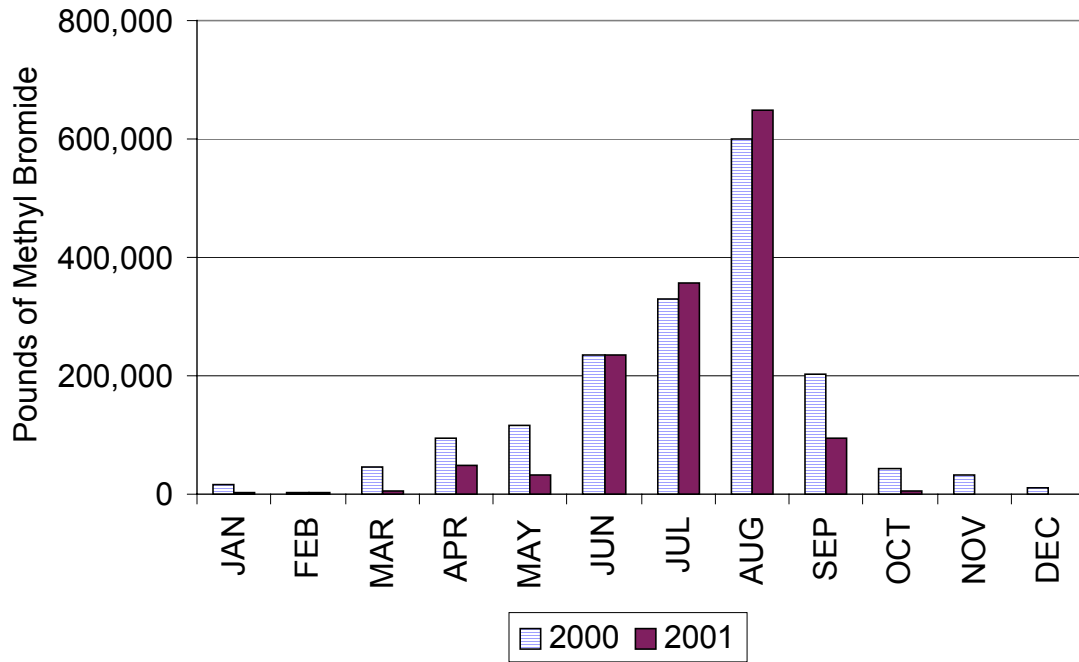


Figure 14. 2001 Ventura County methyl bromide use by month and day



Monitoring occurred 8/15/01 - 10/10/01



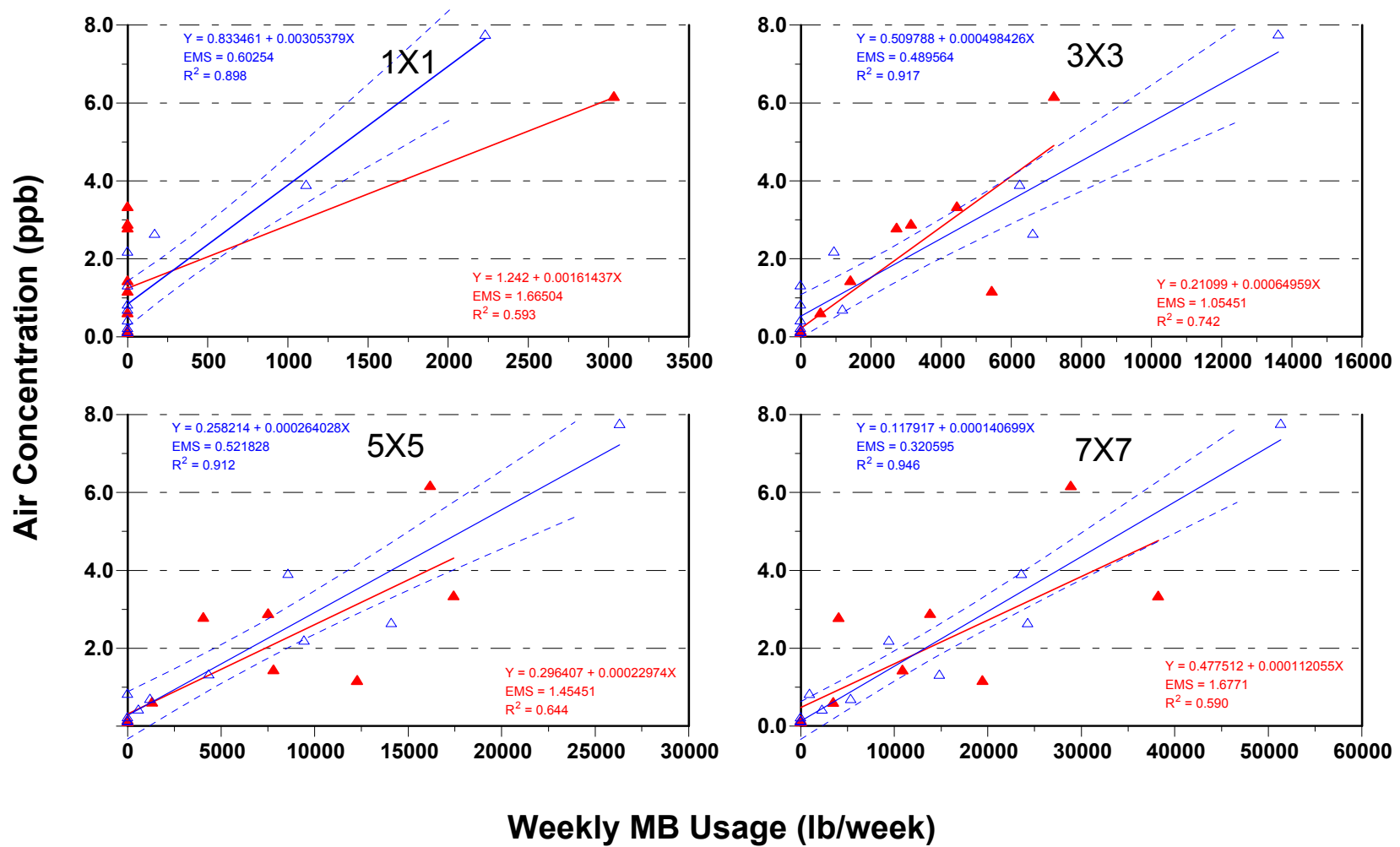


Figure 15 Comparison between ARB 2000 and 2001 regression models

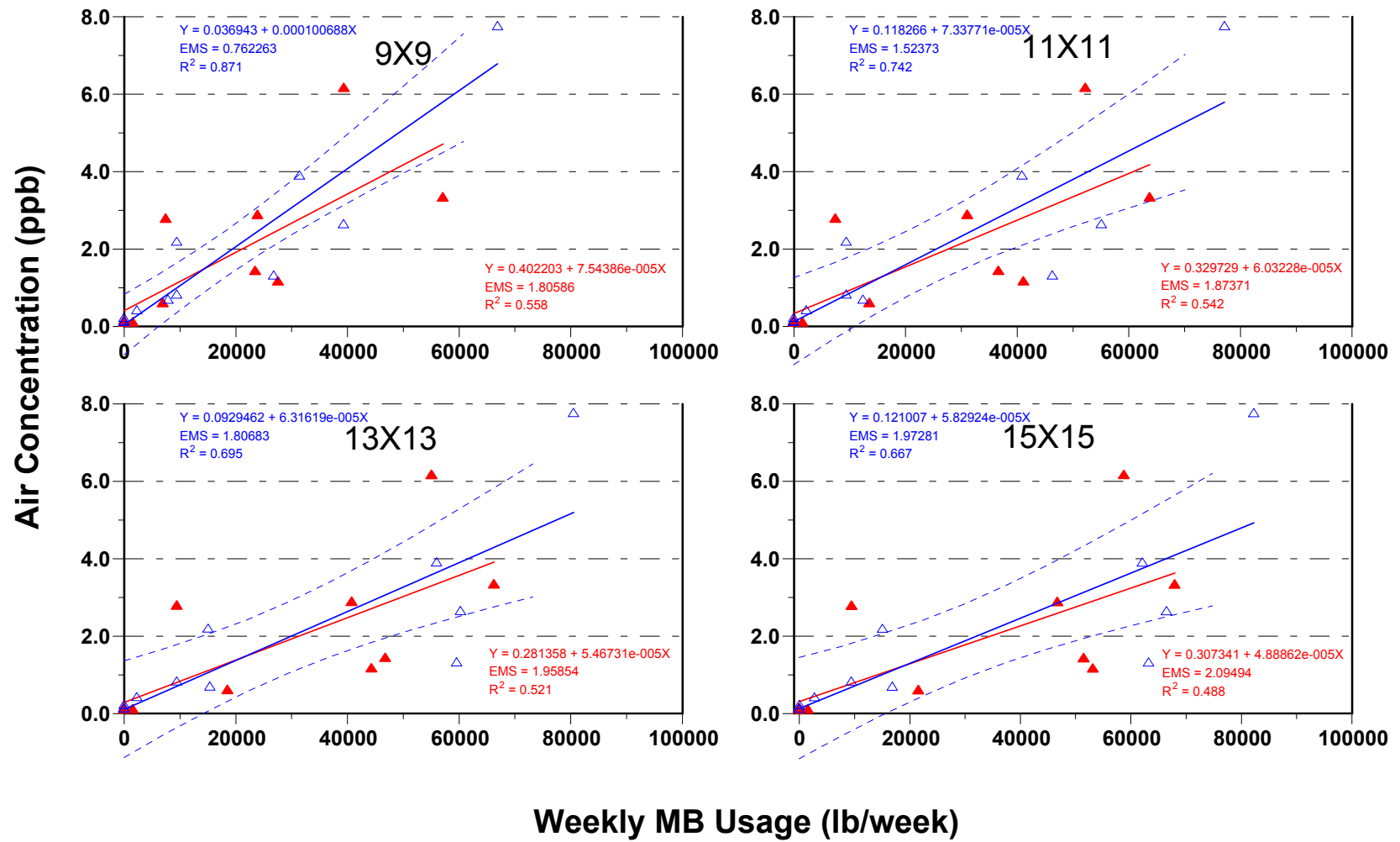


Figure 16 Comparison between ARB 2000 and 2001 regression models

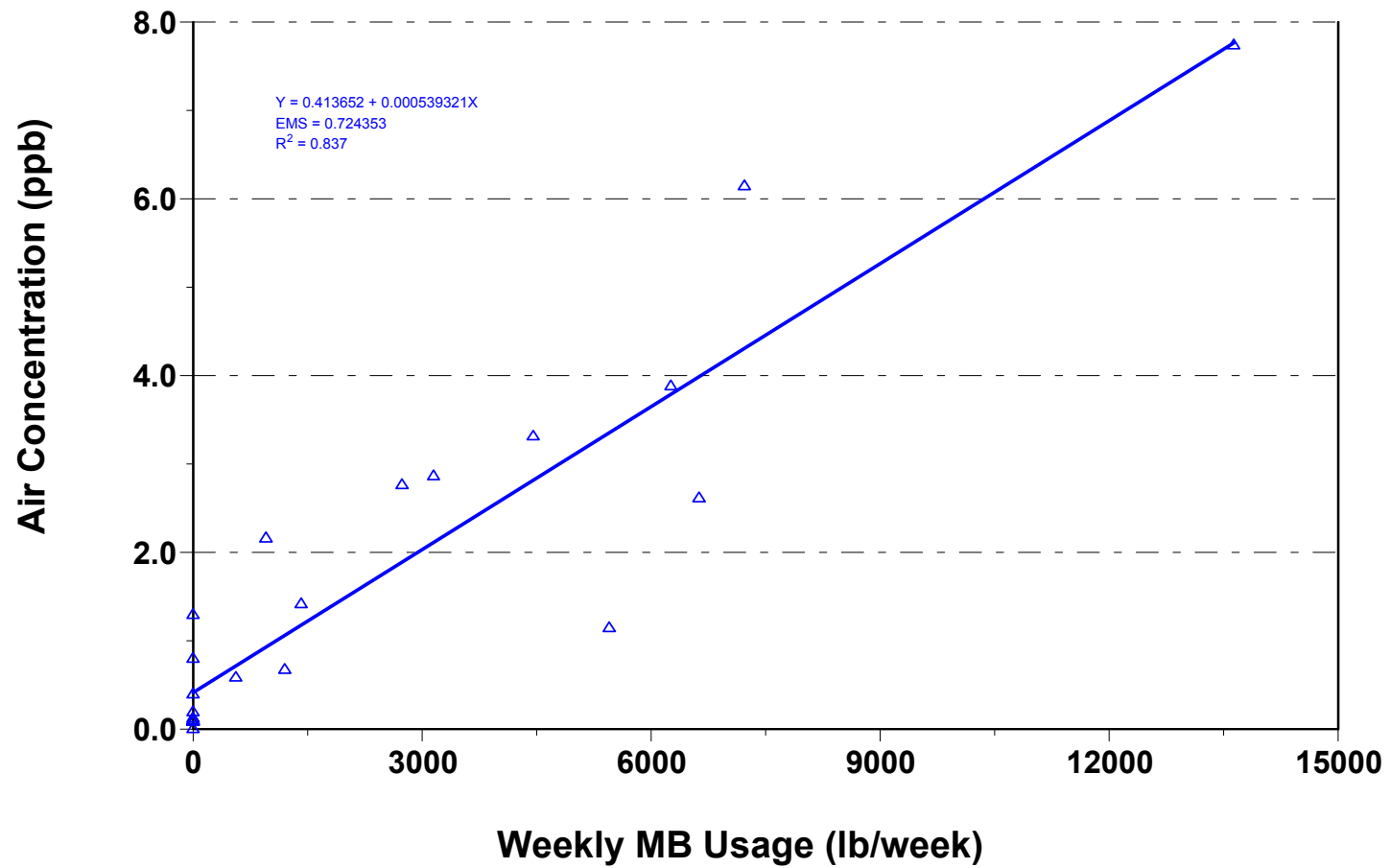


Figure 17 2000 and 2001 combined ARB regression model with the highest correlation

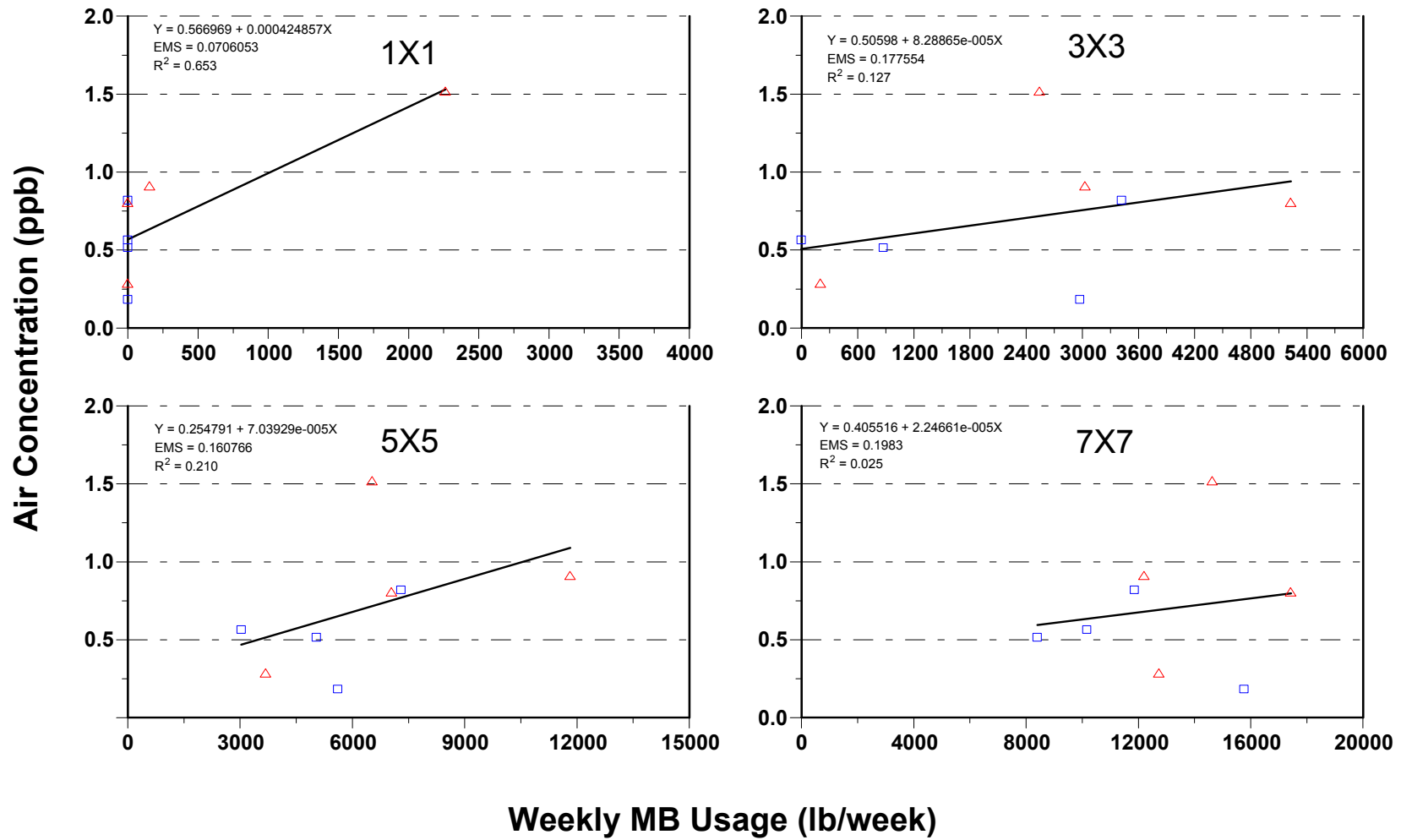


Figure 18 2001 AMBI regression models



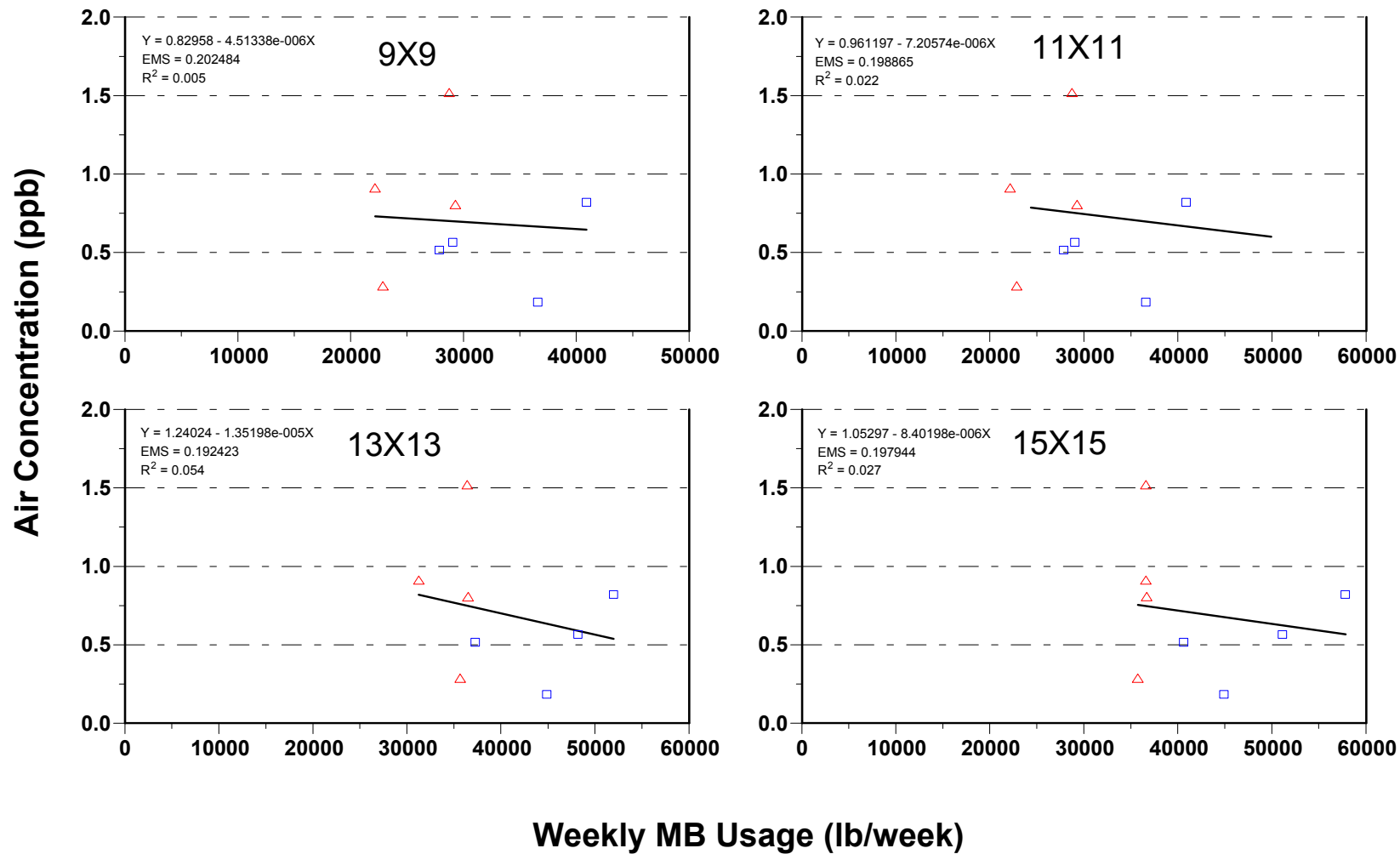


Figure 19 2001 AMBI regression models