

# Salt Marsh Harvest Mouse (*Reithrodontomys raviventris*)



Laurie Briden(CDFG)

# Salt Marsh Harvest Mouse

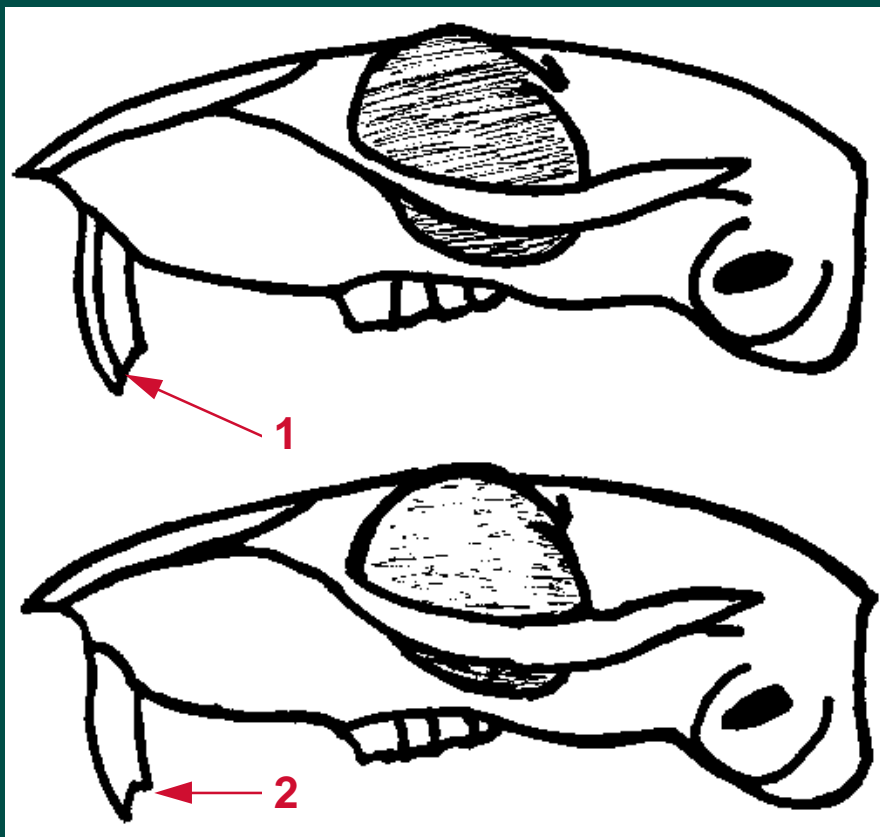
## Characteristics



B. "Moose" Peterson/WRP

- Body length is 69 to 76 mm (2.75-3.0 in.).
- The tail can be bicolored and equally long or longer than the body.
- Weight: 8-12 g (0.3 oz).
- Salt Marsh Harvest Mice have a dark brown coat on the back, the belly and sides are pinkish-cinnamon to tawny.

# Harvest Mouse vs House Mouse Skulls

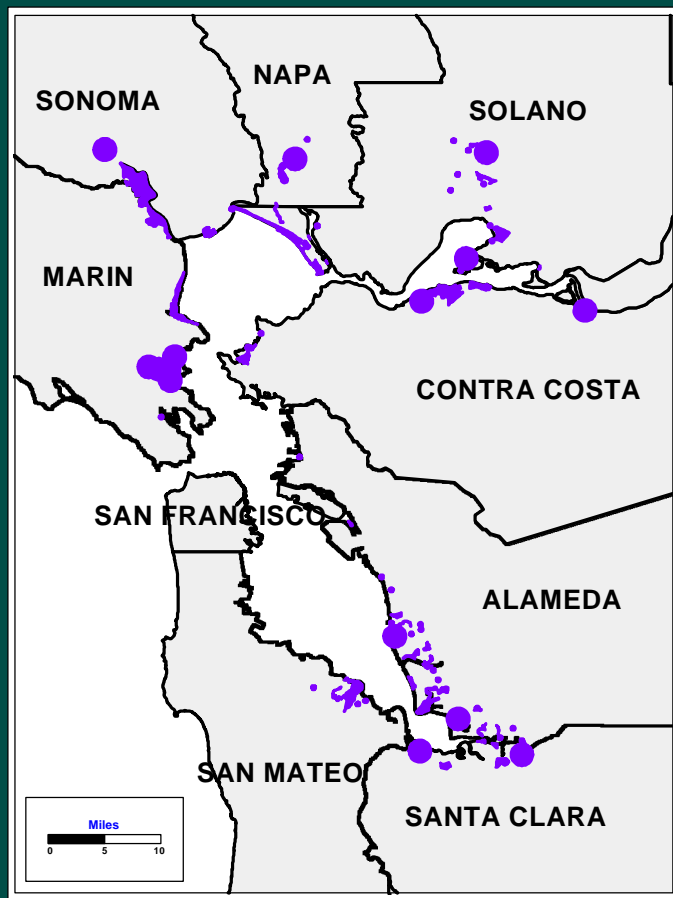


- Harvest mouse has a grooved upper incisor (see #1).
- House mouse has notched upper incisor (see #2).

# Salt Marsh Harvest Mouse Behavior

- SMHM are primarily nocturnal, some crepuscular activity has also been observed under laboratory conditions.
- Active all year round.
- Salt Marsh Harvest Mice are good swimmers and climbers.
- SMHM do not use burrows, they build a grass nest or use abandoned birds' nests.
- Limited, individual daily movements into adjacent grasslands.

# Salt Marsh Harvest Mouse Range



- Two known subspecies divided in two ranges.
- Northern: found in Marin, Sonoma, Napa, Solano and northern Contra Costa.
- Southern: found in San Mateo, Alameda and Santa Clara. Some isolated populations occur in Marin and Contra Costa.

# Salt Marsh Harvest Mouse Habitat



Tupper Ansel Blake

- SMHM prefers tidal and diked coastal salt marshes characterized by dense stands of pickleweed.
- Grasslands adjacent to pickleweed marsh are also used, but only when new grass growth affords suitable cover.

# Salt Marsh Harvest Mouse Habitat



Laurie Briden (CDFG)



# Salt Marsh Harvest Mouse Reproduction

- Breeds from Spring to Fall.
- One to two litters per year.
- Average litter size is 3-4 young.
- There is no information available for weaning or age for sexual maturity.

# Salt Marsh Harvest Mouse

## Food and Water

- Presumably feeds on seeds, grasses and forbs as available in their habitat.
- In winter, fresh green grasses are preferred. The rest of the year, they feed on pickleweed and salt grass.
- SMHM require free water, but they are known to consume brackish/sea water.

# Salt Marsh Harvest Mouse Mortality Factors

- Predation: Egrets, Night herons, Clapper rails and miscellaneous Raptors.
- The endangerment of this species is mostly related to loss of habitat due to urban development or flooding due to land subsidence.