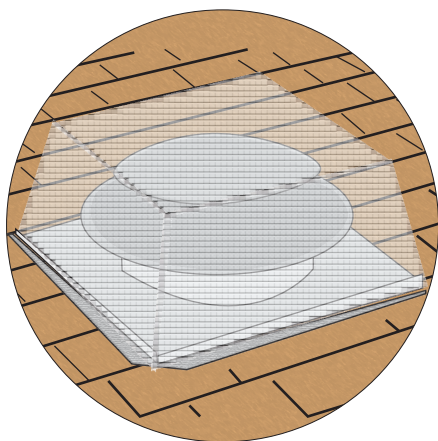


BEST MANAGEMENT PRACTICES

Commensal Rodents

EXCLUDE



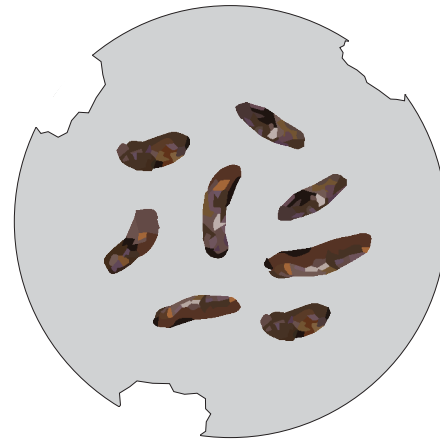
Seal gaps, cover vents, and install door sweeps to prevent access

CLEAN



Improve sanitation habits to remove food, water, and shelter for rodents

MONITOR



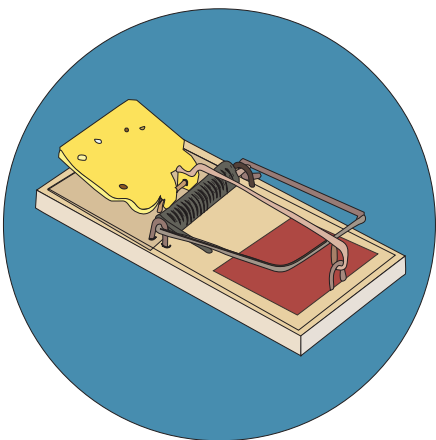
Monitor for rodent activity year-round to avoid infestation

IDENTIFY



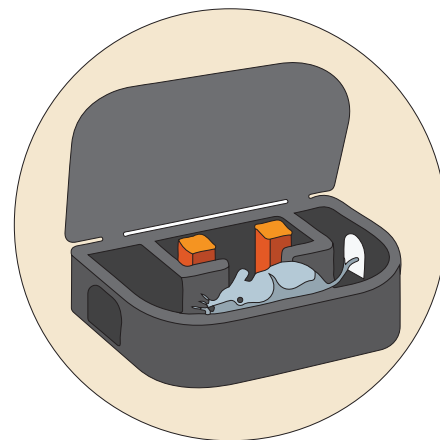
Identify rodent species to ensure effective management

TRAP



Set traps in locations where pest activity is found to eliminate rodents

BAIT



Place traps or baits in tamper-proof bait boxes to reduce exposure risks

Visit our website:
www.cdpr.ca.gov

Email us at:
school-ipm@cdpr.ca.gov