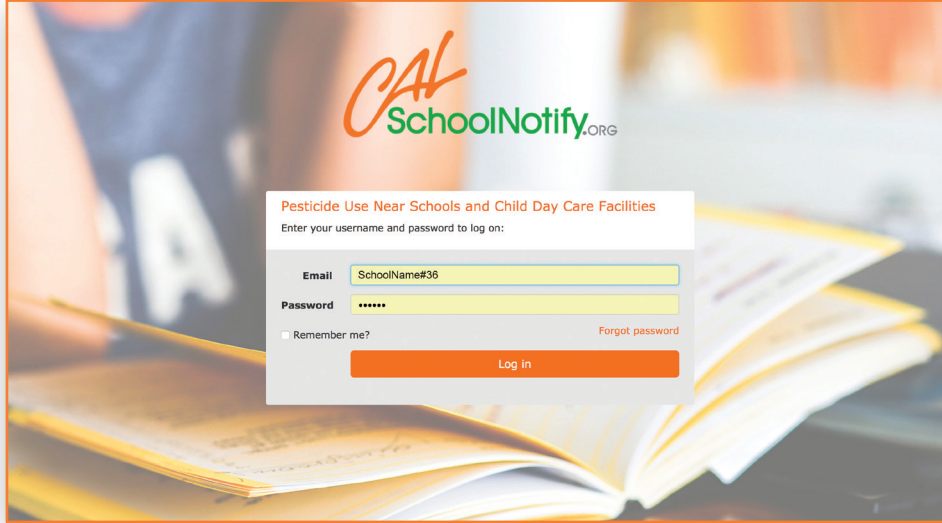


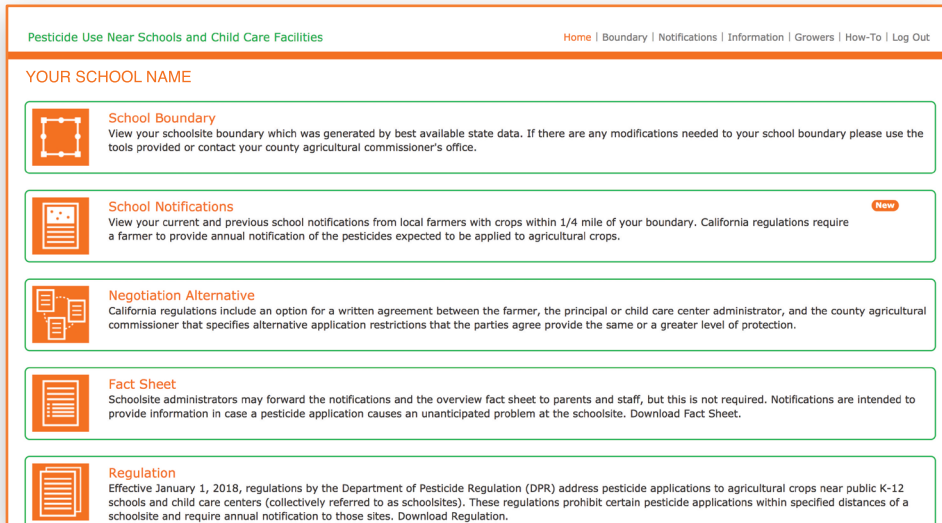


Pesticide Use Near Schools and Child Care Facilities Website Quick Overview



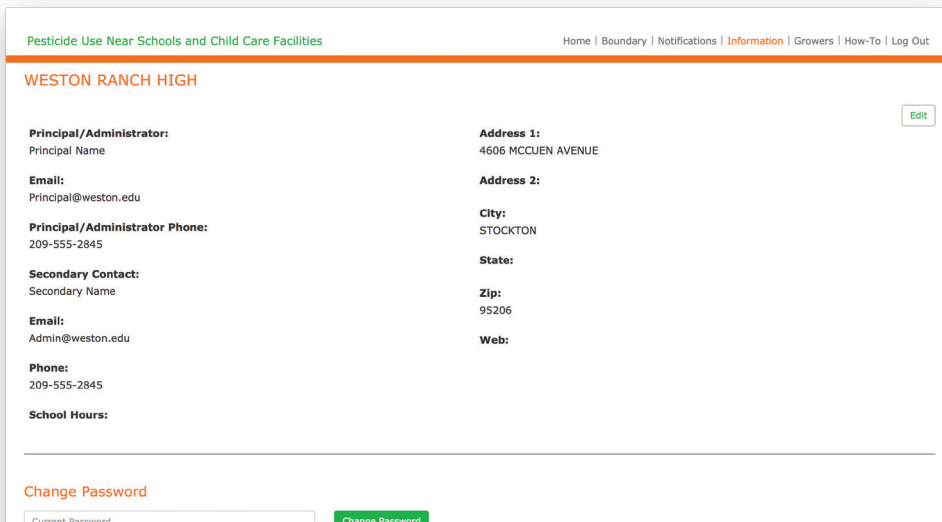
Login to CalSchoolNotify.org with your provided credentials.

Only authorized schoolsite administrators will be able to access this website.



Dashboard

Once logged in, you can view the dashboard containing various pages within the site. Furthermore, the school administrator can navigate to verify/update the schoolsite boundary, update your contact information, and view current notifications.



Information

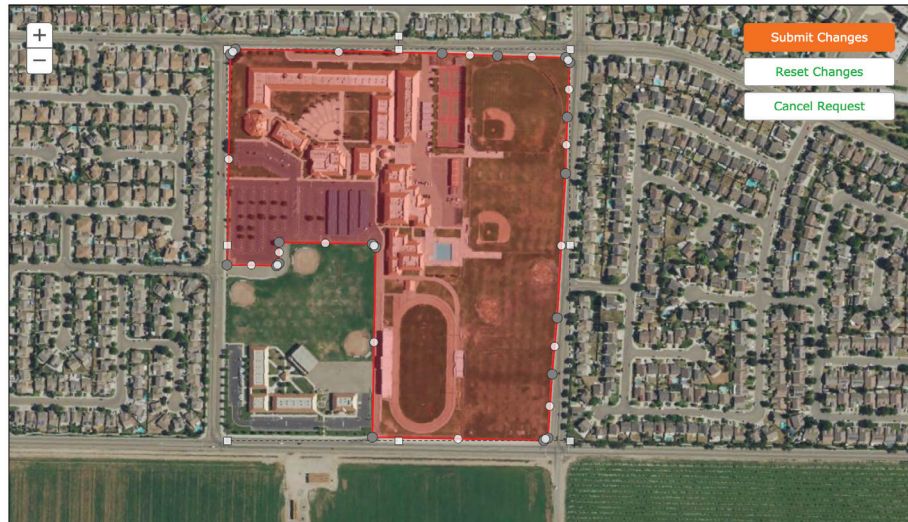
From the **Information** tab, one of the first steps will be to update your contact information. You also have the option to reset your password.

Edit Boundary for **WEST SCHOOL NAME**

Description of boundary change:

Update Boundary:

Move and reshape the boundary on the map to fit the borders of the location.



Boundary

With the **Boundary** tab, you can verify your approved schoolsite boundary and make edits. You must accept the boundary or submit changes to the County Agricultural Commissioner.

With the provided tools, you can edit your school boundary as well as add off-site locations that may be considered part of the school for review. Any changes made are subject to County Agricultural Commissioner approval. Your Commissioner has the option to either accept change request as is, or reject the change request.

A **Help** video tutorial will also be available.

☒ School 1/4 mile buffer

Sites with no notification

The above map shows the location of your schoolsite and the field(s) within 1/4 mile of your boundary.

Current notifications

The county agricultural commissioner may be contacted for questions or additional information, if violations of these requirements are suspected, or for other non-emergency situations.

Date	Property Operator	Type	
2017-06-20	Mana Ranch Farms	Amendment	View
2017-04-30	Gallow Vineyards Inc	Annual	View
2017-04-30	Happy Eagle Fields	Annual	View

[Contact CAC](#) [Download All](#) ⓘ

Notifications

From the **Notification** tab, you will have a detailed account of the annual and amended notifications provided by those farmers who are within a 1/4 mile of your schoolsite boundary.



For more information about CalSchoolNotify.org please contact your County Agricultural Commissioner.